

## Groves:

### What is the size of a grove?

Most are 2–5 acres, with some as large as 10 acres.

### What's the average grove gift amount?

Varies by grove size and location. Minimum of \$35,000; average range of \$50,000–\$80,000; and some more than \$250,000.

### How many groves are dedicated each year?

About 15 on average.

### When was the first grove dedicated?

1921, Colonel Raynal C. Bolling Grove, Humboldt Redwoods State Park.

### Can ashes be scattered in a grove?

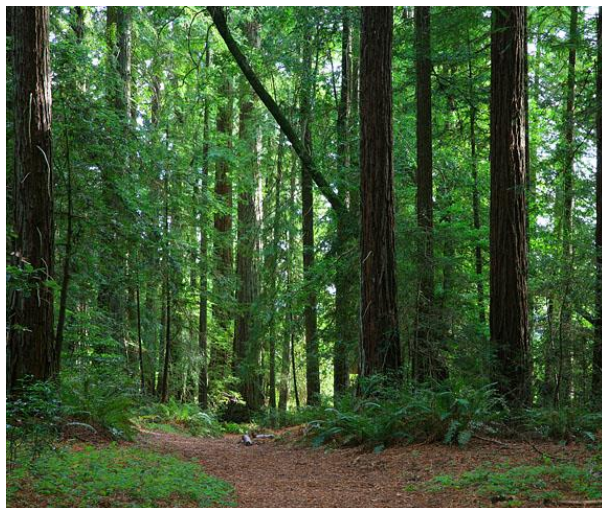
Yes, and League staff members can assist with the simple permit process.

### Where are groves available?

In 19 parks throughout Northern California. Please contact the League to request maps.

### Can I have a bench in my grove?

Benches are only permitted in League groves that are dedicated in the Grove of Old Trees property west of Occidental in Sonoma County. State Parks no longer permits benches to be placed within groves that are located in a CA State Park.



**The Grove of Old Trees: The only area where benches are still permitted to recognize grove dedications. In most other areas a small sign may be placed in the grove.**

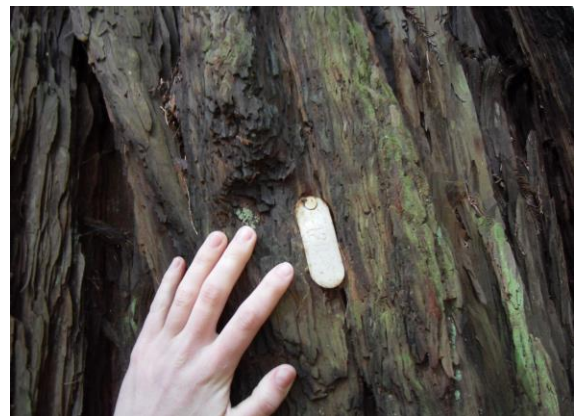
### Are groves dedicated on land that's already protected?

Yes. In recognition of a donor's contribution, an honorary grove is dedicated on land that the League has protected, and funds are used to protect threatened redwood lands.

## Trees:

### What's the donation amount to dedicate a single tree?

\$2,500 to \$25,000, depending on the diameter of the tree.



**Numbered tree tag used to locate individual trees**

### How large are the trees?

Small trees average 2-3 feet diameter; the largest trees are 10+ feet diameter.

### How can I find my tree?

League maps show the location and number of each tree. In most cases, this number corresponds to a small numbered tag that can be located on the tree at eye level.

### Can a sign or personalized plaque be posted?

No, this in order to avoid cluttering the forest, but personalized text may be added to your map in addition to the tree name.

### Can I scatter ashes near my tree?

Yes, and League staff members can assist with the simple permit process.

### Where are trees available?

In 3 State Parks: Humboldt Redwoods, Butano, and Wilder Ranch.