

Discover Redwoods

Student Journal



Name: _____

Date: _____

1 Answer the following Guiding Questions. It is OK if you do not know the answers to all of them.

What plants and animals live in a redwood forest?

Add to your answer after learning about redwoods

What do all trees/plants need to grow?

Add to your answer after learning about redwoods

What characteristics do redwood have that help them grow and thrive?

Add to your answer after learning about redwoods

What do the rings of a tree tell you about its life?

Add to your answer after learning about redwoods

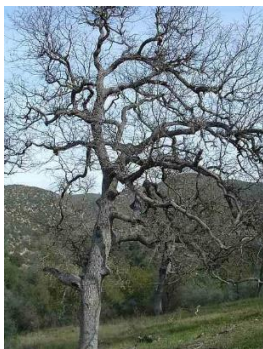
Discover Redwoods

Student Journal

2 Neighborhood Tree Search

Walk around your neighborhood with an adult. Look for different trees and make observations about them, what patterns do you notice, how are they similar, how are they different?

Put an X by the pictures you saw during your walk.



What are three observations you made about the trees in your neighborhood?

Draw one of the leaves you picked up. DO NOT TRACE IT.

Discover Redwoods

Student Journal

3 Redwood Scavenger Hunt - Click here to watch the [Redwood Scavenger Hunt video](#)

Write down one thing you learned about each of the objects below.



I learned...



I learned...



I learned...



I learned...

Discover Redwoods

Student Journal

4 **Tree Cookies** – Look at the different tree [cookie pictures](#), or real tree cookies.

A tree puts on a new layer of wood every year. You see this as a light and dark ring. The light ring is wood put on during the early growing season and the dark ring is wood put on during the late growing season – all in the same year.

1 year of growth



Complete the following statements.

What you notice	I notice...
Write what questions you have	I wonder...
Write down what these tree cookies remind you of.	This reminds me of...

Discover Redwoods

Student Journal

5

Build a Tree

Click here to watch the [Build a Tree Video](#)

Draw a line from the tree part to what it does - its function.

Bark

Growth layer of the tree

Sapwood/Xylem

Makes food for the tree

Roots

Protects the tree from bugs
and fire

Heartwood

Moves food

Cambium

Supports the tree on the
inside

Phloem

Moves water

Leaves

Sucks up water and
nutrients from the soil

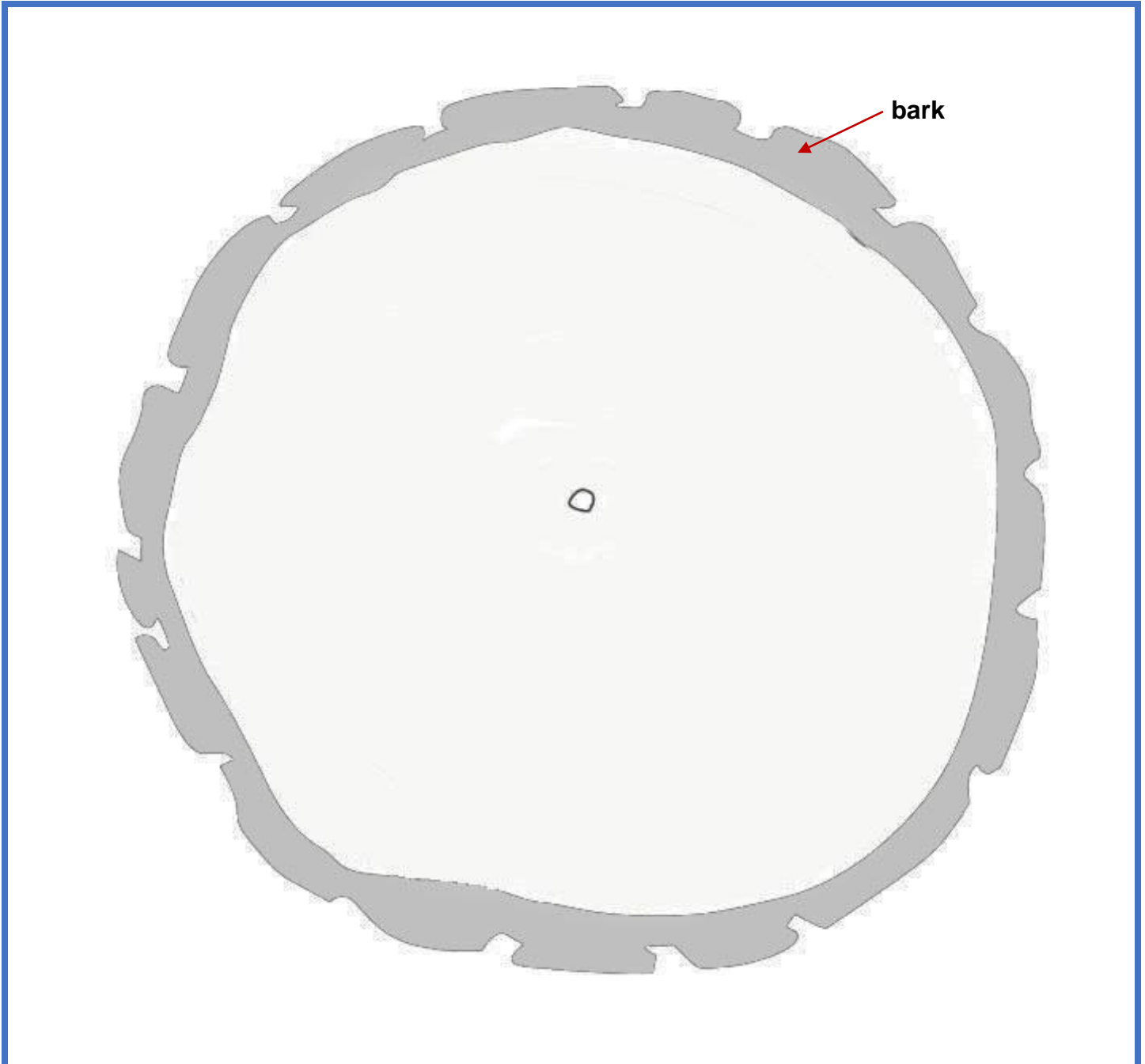
Discover Redwoods

Student Journal

6 **Tree Cookies** - Draw a ring for every year old you are. (If you are 8, draw 8 rings)

Color the inner most rings of your tree cookie (3-4 rings) **dark brown**. Color the rest of the rings, **light brown**. Draw one ring right under the bark that is **blue**. Draw another ring right inside the blue circle that is **green**. Label the different parts of the tree cookie using the following guide.

Light brown – sapwood **Dark brown** – heartwood **Green** – cambium **Blue** – phloem



Discover Redwoods

Student Journal

7

Redwood Needles

Count the different sections of the redwood needle picture below. How old is it?



Draw a redwood branch that is the same age as you.