

EMBARGOED UNTIL JANUARY 30, 2020 AT 1PM PDT

Contact:

Robin Carr, Landis Communications Inc.

Phone: (415) 971-3991 | Email: redwoods@landispr.com



CASCADE CREEK PROPERTY FACT SHEET



Cascade Creek. Photo by Victoria Reeder, Save the Redwoods League.

PROPERTY FACTS:

- The 564-acre redwoods property is located in Santa Cruz county, between Big Basin Redwoods and Año Nuevo state parks. *A map of the property is included below.*
- Protecting it will serve to create a continuous strip of protected coast redwood habitat from the Santa Cruz Mountains to the Pacific Ocean.
- The property contains more than 100 acres of old-growth coast redwoods and expansive stands of large second-growth redwoods.
 - Cascade Creek is a research site for the League's [Redwoods and Climate Change Initiative](#) (RCCI) research program.
 - In 2019, researchers from Humboldt State University studied four of the old-growth trees and dated them between 420 and 528 years old. They also identified a 100-year-old second-growth tree that has grown remarkably fast—it is now larger than and nearly as tall as the oldest tree studied. All five trees were between 204 and 235 feet tall.

- In addition to its redwoods, the property supports knobcone pine forest and groves of mature madrones. The property is rich in habitat that can support a wide range of species, from apex predators such as mountain lions to woodland amphibians. Cascade Falls, the property's namesake, is a 50-foot waterfall on Cascade Creek just south of the property, a scenic highlight during the winter and spring.

PRESENT AND FUTURE STEWARDSHIP:

- Cascade Creek was purchased by the Holmes Family in 1978, and it has served as a family recreational retreat over the past four decades. The family owned timber mills in Humboldt County and Santa Cruz County but also supports redwoods conservation and stewarded the property well.
- Because of the Holmes family's stewardship, there is very little restoration work needed on the property. The second-growth stands are not overcrowded. They are growing on stable soils with adequate nutrients and water, and they will develop the qualities of older forests relatively rapidly.
- The League aims to transfer the property to a permanent steward such as California State Parks for long-term management with Big Basin Redwoods State Park and Año Nuevo State Park.
- In 2015 the League, together with Peninsula Open Space Trust (POST), purchased the 145-acre Peters Creek property, adjacent to Cascade Creek, which the Holmes Family also owned.

TRANSACTION AND FUNDING:

- The acquisition is one of several central land-protection projects within the League's new campaign, [*Forever Forest: The Campaign for the Redwoods*](#), along with the [Alder Creek](#) and [Red Hill](#) giant sequoia properties in the Sierra Nevada and the [Harold Richardson Redwoods Reserve](#) in Sonoma County that the League recently protected. Cascade Creek is a keystone acquisition that helps set the stage for the next hundred years of redwood conservation.
- The League is seeking to raise \$9.6 million to acquire the Cascade Creek property, cover its acquisition costs and steward the property during its ownership.
- Cascade Creek has been appraised at more than \$10 million. The Holmes Family has agreed to sell it to the League for \$9 million, a more than \$1 million discount and contribution to its future protection.
- The acquisition and protection of Cascade Creek is predicated on the League raising \$9.6 million by May 30, 2020. To date, the League has raised \$8.6 million toward that goal: The Gordon and Betty Moore Foundation has committed a significant lead gift; the Peninsula Open Space Trust (POST), a project partner, will contribute \$2 million; the California State Coastal Conservancy voted last month to approve a grant up to \$2.5 million; and private individuals have contributed \$1.85 million through the *Forever Forest* campaign.

- *Forever Forest* campaign lead donors, Ralph Eschenbach and Carol Joy Provan, were so inspired by the opportunity to save Cascade Creek that they donated an initial \$500,000 to launch the fundraising effort. In order to help meet the goal, they have pledged an additional \$500,000 if it is matched dollar-for-dollar by May 30, 2020. The public can donate to support the protection and restoration of Cascade Creek at: SaveTheRedwoods.org/SaveCascade.

STATEMENT FROM LEAGUE PRESIDENT AND CEO SAM HODDER:

“Cascade Creek has more than 100 acres of ancient coast redwoods and expansive stands of large second-growth redwoods. Right here in the Bay Area, we are protecting a critical piece of our ‘forever forest.’ Interwoven among the ancient trees is a young redwood forest growing back and already well on its way to becoming the old-growth forest of the future,” said **Hodder**. “The opportunity to connect two state parks and heal a mountain-to-sea landscape helps ensure the long-term ecological health and climate resiliency of the entire region.”

STATEMENTS FROM THE LANDOWNERS:

“The main reasons we want to save this property are for future generations, for my grandchildren, their children and for the planet. It’s a good feeling knowing that it’s going to be forever preserved,” said **Bronia Holmes**.

“This is a piece of property my parents bought in 1978,” said **Larry Holmes**. “The property is the headwaters for Cascade Creek, and halfway up the valley of the creek is a stand of old-growth redwoods. It’s a piece of property that should be a part of the state parks. We’ve known that for many years. And then when you realize that 95 percent of the old-growth redwoods were cut at one time, it’s very important to save the redwood trees.”

* * *

Save the Redwoods League

One of the nation’s oldest conservation organizations, Save the Redwoods League has been protecting and restoring redwood forests since 1918, connecting generations of visitors with the beauty and serenity of the redwood forest. The League’s 29,000 supporters have enabled it to protect more than 216,000 acres of irreplaceable forests in 66 state, national, and local parks and reserves. For more information, please visit: SaveTheRedwoods.org.

* * *

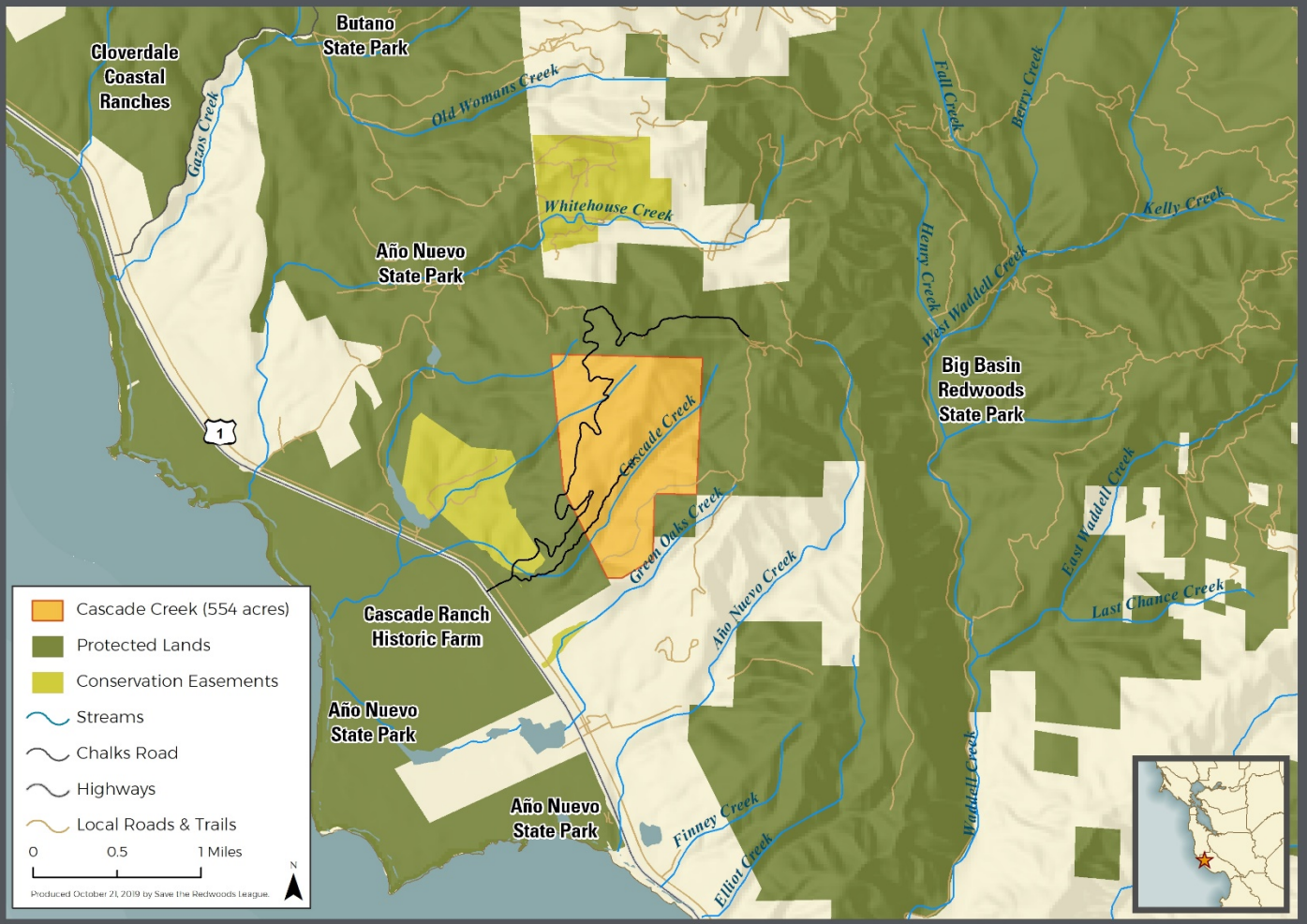
To schedule an interview, contact Robin Carr at (415) 971-3991 or redwoods@landispr.com. **To access hi-res images, b-roll video or drone footage** of the Cascade Creek property, please [visit our newsroom](#).

See map graphic next page

CASCADE CREEK

SANTA CRUZ COUNTY

Save The Redwoods
LEAGUE®



###